

4mm SMD Trimmer Potentiometer – 3224

TSR-3224

Electrical Characteristics

Standard Resistance Range	50Ω - 1MΩ
Resistance Tolerance	±10%
Terminal Resistance	≤±1%R or 2Ω (whichever is larger)
Contact Resistance Variation	(CRV) ≤ ±3%R or 3Ω (whichever is larger)
Insulation Resistance	≥1GΩ(100V AC)
Withstand Voltage	101.3 kPa 600V · 8.5 kPa 250V
Effective Travel	11±2 turns nom

Environmental Characteristics

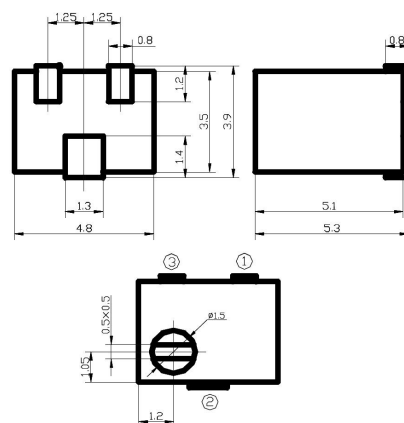
Power Rating	0.25W(70°C) 0W(125°C)
Temperature Range	-55°C ~ +125°C
Temperature Coefficient	±250ppm/°C
Temperature Variation	$R_{\leq \pm 2\%R}$ · $\Delta(U_{ab}/U_{ac})_{\leq \pm 1\%}$
Vibration	10 – 500Hz, 0.75mm, 6h $\Delta R_{\leq \pm 1\%R}$ · $\Delta(U_{ab}/U_{ac})_{\leq \pm 2\%}$
Collision	390m/s ² , 4000cycles, $\Delta R_{\leq \pm 1\%R}$
Electrical Endurance at 70°C	0.25W · 1000h · $\Delta R_{\leq \pm 3\%R}$
Rotational Life (200 cycles)	$\Delta R_{\leq \pm (10\%R + 0.5\Omega)}$, CRV ≤ ±3% or 5Ω

Physical Characteristics

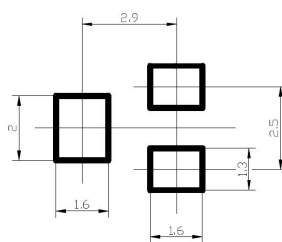
Starting Torque	≤25mN·m
Marking	Resistance Tolerance (When no identification, it is of ±10%) Resistance Code, Model
Standard Packaging	250pcs, per tape reel

Common Dimensions (mm)

TSR-3224W

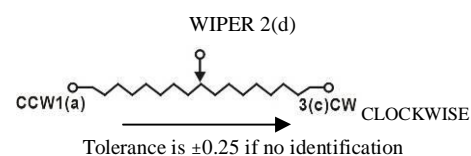


RECOMMENDED PCB LAYOUT: "W"



How to Order

Model	TSR-3224	W	103	R
Style				
Resistance Code				
RoHS				



Resistance Table

Resistance(Ohms)	Resistance Code
50	500
100	101
200	201
500	501
1,000	102
2,000	202
5,000	502
10,000	103
20,000	203
50,000	503
100,000	104
200,000	204
500,000	504
1,000,000	105

Special resistances available.