

TS07D



FEATURES

- Metallized polypropylene film, non-inductive wound construction.
- Good self-healing properties, withstanding surge voltage stressing.
- Long stability of capacitance.
- Good properties in damp environment.
- Flame resistant epoxy resin powder coating (UL94/V-0).

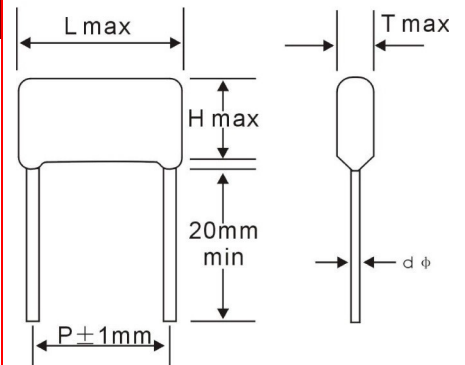
Type Application

Suitable for applications in serial with the 100~240Vac mains, as a small power LED driver module, small household electrical appliances control panel (electric kettle, electric cooker, coffee machine, hair straightener etc.), thermostat, replace the transformer.

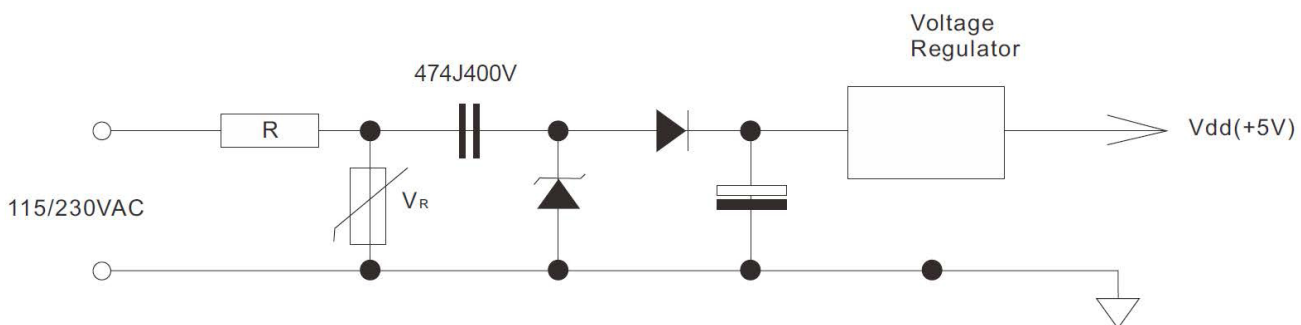
Widely used in LC resonant, high frequency high current situation

SPECIFICATIONS

Reference Standard	GB/T 14579 (IEC 60384-17)			
Climatic Category	40/85/21 B			
Rated Temperature	85°C			
Operating Temperature	-40°C~+85°C			
Rated Voltage(50/60Hz)	160Vac	230Vac	250Vac	275Vac/300Vac
Maximum Continuous DC Voltage	400Vdc		630Vdc	
Voltage Proof	1.6UR (5S)			
Capacitance Range	0.01 ~ 4.7μF			
Capacitance Tolerance	±5% (J), ±10% (K)			
Insulation Resistance	R≥15000MΩ		C _N ≤0.33μF	
	R≥5000s		C _N >0.33μF	
	(20°C, 100V, 1min)			
Dissipation Factor	≤0.1% (20°C, 1KHz)			



Note: For long life time and continuous working, please choose 275Vac and upwards voltage.



TS07D

VDC Mfd	400 VDC (2G)					630 VDC (2J)				
	L	T	H	d	P	L	T	H	d	P
0.01	10	5.6	8.5	0.6	7.5	13	5.5	9	0.6	10
	13	5.5	9	0.6	10					
0.012	10	6	9	0.6	7.5	13	6	10	0.6	10
	13	6	10	0.6	10					
0.015	10	6.4	9.5	0.6	7.5	13	6	10	0.6	10
	13	6	10	0.6	10					
0.018	13	7	11	0.6	10	13	7	11	0.6	10
						18	5.5	9.5	0.6	15
0.022	13	7	11	0.6	10	13	7	11	0.6	10
						18	5.8	9.8	0.6	15
0.033	13	6.5	10	0.6	10	13	6.5	10	0.6	10
	18	6.5	11.5	0.6	15	18	6.5	11.5	0.6	15
0.036	13	6.5	10	0.6	10	13	6.5	10	0.6	10
	18	7	12	0.6	15	18	7	12	0.6	15
0.039	13	6	11	0.6	10	18	6.6	12	0.6	15
0.047	13	6.5	11.5	0.6	10	13	6.5	11.5	0.6	10
	18	7.5	12.5	0.6	15	18	7.5	12.5	0.6	15
0.068	13	6	10.5	0.6	10	13	8	13	0.6	10
	18	6	9.5	0.6	15	18	8.5	14	0.6	15
0.1	13	7	12	0.6	10	18	6.7	11.5	0.6	15
	18	6.5	11	0.6	15	18	10.5	16	0.8	15
0.15	19	7.5	13	0.8	15	19	7.5	13	0.8	15
0.22	18	9	14.5	0.8	15	18	9	14.5	0.8	15
0.33	18	9	16	0.5	15	25	8.5	15	0.8	22.5
	23	7.5	14.5	0.8	20					
0.39	18	9.5	16.5	0.5	15	25	9	16	0.8	22.5
	23	7.5	14.5	0.8	20					
0.47	23	8	15	0.8	20	23	8.5	15.5	0.8	20
	25	9.5	16	0.8	22.5	25	9.5	16	0.8	22.5
0.56	23	9	15.5	0.8	20	25	10.5	17.5	0.8	22.5
	18	11	17.5	0.6	15	31	9	17	0.8	27.5
0.68	25	10.5	18	0.8	22.5	23	11.5	18	0.8	20
	23	10.5	17.5	0.8	20	31	11	18	0.8	27.5
0.82	23	8	14	0.8	20					
	25	10.5	17	0.8	22.5					
1.0	25	11.5	18	0.8	22.5	25	13	21	0.8	22.5
	23	10.5	16	0.8	20	31	12	20	0.8	27.5
	31	10	18.5	0.8	27.5					
1.5	23	12	20	0.8	20	31	15	23	0.8	27.5
	31	11	18.5	0.8	20					
2	31	10.5	19	0.8	27.5					
	25	13	21	0.8	22.5					
	23	12.5	20	0.8	20					
2.2	31	15	23	0.8	27.5					
	25	14	22	0.8	22.5					
	23	12.6	21.5	0.8	20					
3.3	31	15.5	24	0.8	27.5					
	31	16.5	24.5	0.8	27.5					

Note: Specification are subject to change without notice. For more detail and update, please visit our website.