

# 4mm SMD Trimmer Potentiometer – 3224

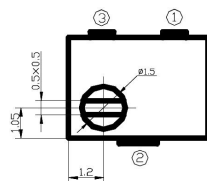
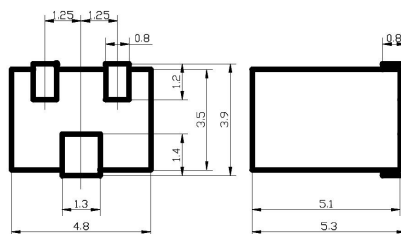
# TSR-3224



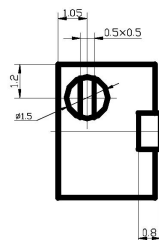
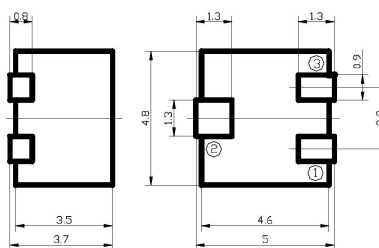
Electrical Characteristics	
Standard Resistance Range	10Ω - 1MΩ
Resistance Tolerance	±10%
Terminal Resistance	≤±1%R or 2Ω (whichever is larger)
Contact Resistance Variation	(CRV) ≤ ±3%R or 3Ω (whichever is larger)
Insulation Resistance	≥1GΩ(100V AC)
Withstand Voltage	101.3 kPa 600V · 8.5 kPa 250V
Effective Travel	11±2 turns nom

Common Dimensions (mm)

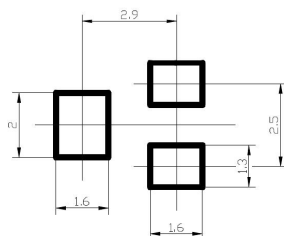
TSR-3224W



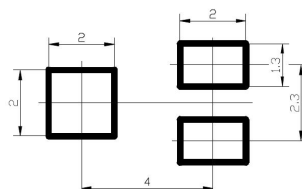
TSR-3224J



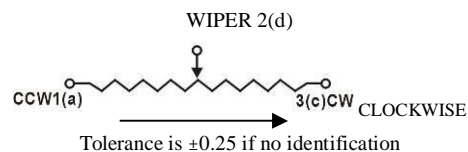
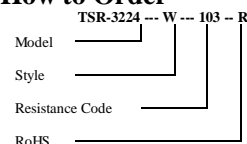
RECOMMENDED PCB LAYOUT- "W"



RECOMMENDED PCB LAYOUT- "J"



## How to Order



Environmental Characteristics	
Power Rating	0.25W(70°C) 0W(125°C)
Temperature Range	-55°C ~ +125°C
Temperature Coefficient	±250ppm/°C
Temperature Variation	R≤±2%R, Δ(Uab/Uac)≤±1%
Vibration	10 – 500Hz, 0.75mm, 6h ΔR≤±1%R, Δ(Uab/Uac)≤±2%
Collision	390m/s², 4000cycles, ΔR≤±1%R
Electrical Endurance at 70°C	0.25W · 1000h · ΔR≤±3%R
Rotational Life (200 cycles)	ΔR≤±(10%R+0.5Ω), CRV≤±3% or 5Ω

Physical Characteristics	
Starting Torque	≤25mN·m
Marking	Resistance Tolerance (When no identification, it is of ±10%)
	Resistance Code, Model
Standard Packaging	250pcs, per tape reel

## Resistance Table

Resistance(Ohms)	Resistance Code
10	100
20	200
50	500
100	101
200	201
500	501
1,000	102
2,000	202
5,000	502
10,000	103
20,000	203
25,000	253
50,000	503
100,000	104
200,000	204
250,000	254
500,000	504
1,000,000	105

Special resistances available.

Note: Specifications are subject to change without notice. For more detail and update, please visit our website.