

GBU6005 THRU GBU610

SINGLE-PHASE BRIDGE RECTIFIER GLASS PASSIVATED BRIDGE RECTIFIERS
 REVERSE VOLTAGE 50 to 1000 Volts FORWARD CURRENT 6.0 Ampere

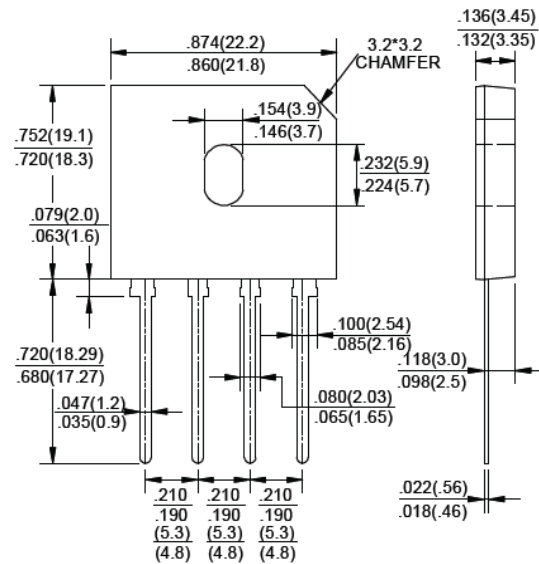
FEATURES

- ◆ Rating to 1000V PRV
- ◆ Ideal for printed circuit board
- ◆ Reliable low cost construction utilizing molded plastic Technique
- ◆ The plastic material has UL flammability classification 94V-0
- ◆ Electrically isolated base-1500 Volts

Mechanical Data

- ◆ Polarity : As marked on Body
- ◆ Weight : 0.15 ounces, 4.0 grams
- ◆ Mounting position : Any

GBU



Dimensions in inches and (millimeters)

MAXIMUM RATINGS AND ELECTRICAL CHARACTERISTICS

Rating at 25°C ambient temperature unless otherwise specified.

Single phase, half wave, 60Hz, resistive or inductive load. For capacitive load, derate current by 20%

PARAMETER	SYMBOL	GBU 6005	GBU 601	GBU 602	GBU 604	GBU 606	GBU 608	GBU 610	UNIT
Maximum Recurrent Peak Reverse Voltage	V_{RRM}	50	100	200	400	600	800	1000	v
Maximum RMS Voltage	V_{RMS}	35	70	140	280	420	560	700	v
Maximum DC Blocking Voltage	V_{DC}	50	100	200	400	600	800	1000	v
Maximum Average Forward (with heatsink Note 2) Rectified Current, @ $T_c=100^\circ\text{C}$ (without heatsink)	$I_{(AV)}$					6.0			A
Peak Forward Surge Current 8.3ms single half sine-wave superimposed on rated load	I_{FSM}					175			A
Maximum Forward Voltage at 3.0A DC	V_F					1.0			v
Maximum DC Reverse Current @ $T_j = 25^\circ\text{C}$ at Rated DC blocking voltage @ $T_j = 125^\circ\text{C}$	I_R					5.0			μA
I^2t Rating for fusing ($t < 8.3\text{ms}$)	I^2t					127			A^2S
Typical Junction Capacitance per element (Note 1)	C_j					45			pF
Typical Thermal Resistance (Note 2)	$R_{\theta JC}$					2.2			$^\circ\text{C}/\text{W}$
Operating Temperature Range	T_j					-55 to +150			$^\circ\text{C}$
Storage Temperature Range	T_{STG}					-55 to +150			$^\circ\text{C}$

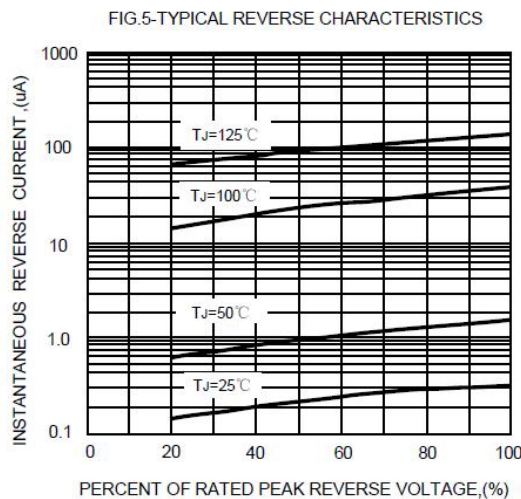
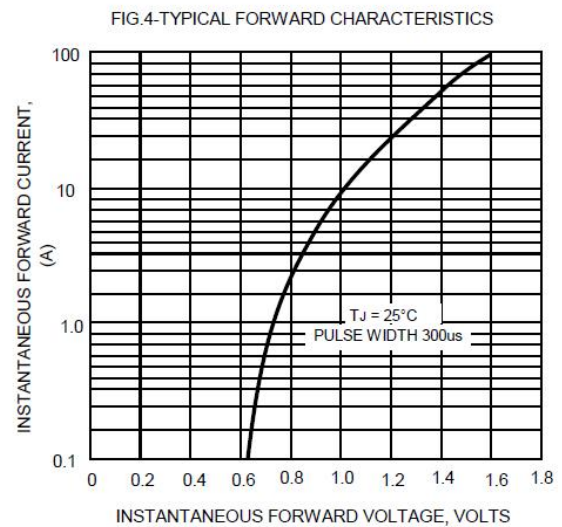
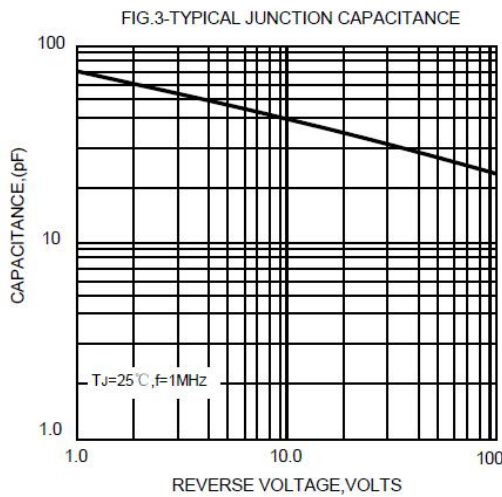
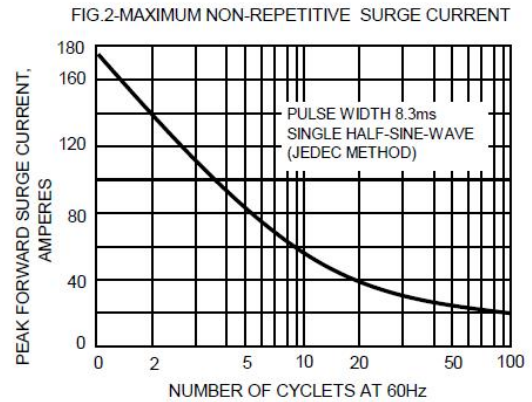
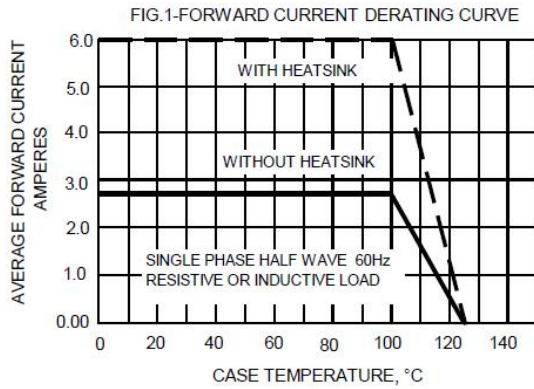
Note: 1. Measured at 1.0MHz and applied reverse voltage of 4.0V DC.

2. Device mounted on 75mm x 75mm x 1.6mm Cu Plate Heatsink.

GBU6005 THRU GBU610

SINGLE-PHASE BRIDGE RECTIFIER GLASS PASSIVATED BRIDGE RECTIFIERS
 REVERSE VOLTAGE 50 to 1000 Volts FORWARD CURRENT 6.0 Ampere

RATING AND CHARACTERISTIC CURVES GBU6005 THRU GBU610



Note: Specifications are subject to change without notice. For more detail and update, please visit our website.