

# METALLIZED POLYPROPYLENE FILM CAPACITOR – X2

Suntan®

NON – INDUCTIVE, (UL940V-0) PLASTIC CASE SEALED WITH EPOXY RESIN FOR CAPACITIVE DIVIDER

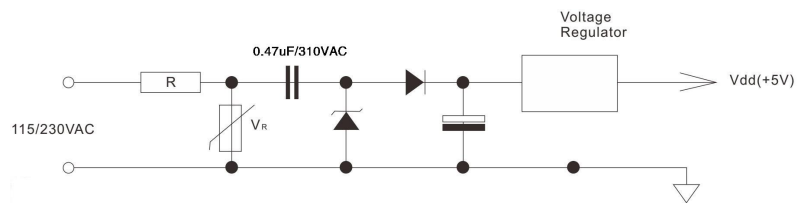
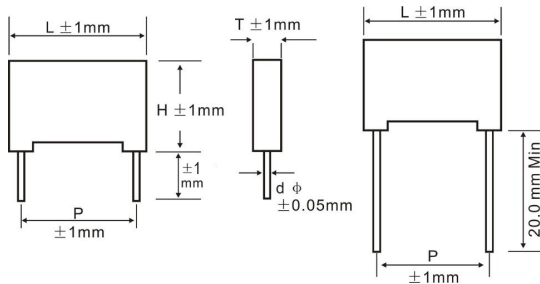
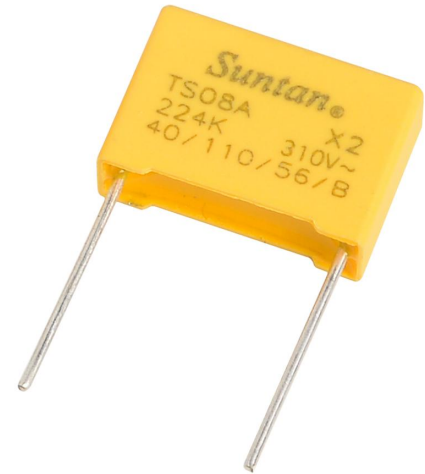
# TS08A

## FEATURES

Suitable for applications in serial with the 100~240Vac mains, such as energy meter, a small power LED driver module, small household electrical appliances control panel (electric kettle, electric cooker, coffee machine, hair straightener etc.), thermostat, replace the transformer.

## SPECIFICATIONS

VOLTAGE RATING	310 VAC
CAPACITANCE RANGE	0.0022 – 2.2 $\mu$ F
CAPACITANCE TOLERANCE	$\pm$ 10% std.
OPERATING TEMPERATURE	-40°C to +110°C
VOLTAGE PROOF	Between Terminal 4.3U <sub>R</sub> DC /60s
DISSIPATION FACTOR	0.0010 $\mu$ F $\leq$ CR $\leq$ 0.47 $\mu$ F $\leq$ 0.1% (1KHz, 20°C) 0.47 $\mu$ F $\leq$ CR $\leq$ 1.0 $\mu$ F $\leq$ 0.2% (1KHz, 20°C) 1.0 $\mu$ F $\leq$ CR $\leq$ 10 $\mu$ F $\leq$ 0.3% (1KHz, 20°C)
INSULATION RESISTANCE	C <sub>R</sub> $\leq$ 0.33 $\mu$ F, I.R $\geq$ 15,000M $\Omega$ C <sub>R</sub> > 0.33 $\mu$ F, I.R $\geq$ 5,000S (20°C, 100V, 1min)



Standard Lead Length: 20mm min

Dimensions Table for 310V AC:

(Unit : mm)

A type											
CAP	L $\pm$ 1.0	T $\pm$ 1.0	H $\pm$ 1.0	P $\pm$ 1.0	d $\varnothing$ ±0.05	CAP	L $\pm$ 1.0	T $\pm$ 1.0	H $\pm$ 1.0	P $\pm$ 1.0	d $\varnothing$ ±0.05
0.0022	13	5	11	10	0.6	0.068	18	5	11	15	0.8
0.0027	13	5	11	10	0.6	0.082	18	6	12	15	0.8
0.0033	13	5	11	10	0.6	0.1	18	6	12	15	0.8
0.0039	13	5	11	10	0.6	0.12	18	6	12	15	0.8
0.0047	13	5	11	10	0.6	0.15	18	7.5	13.5	15	0.8
0.0056	13	5	11	10	0.6	0.15	18	6	12	15	0.8
0.0068	13	5	11	10	0.6	0.15	26.5	6	15	22.5	0.8
0.0082	13	5	11	10	0.6	0.18	26.5	7	16.5	22.5	0.8
0.01	13	5	11	10	0.6	0.22	26.5	7	16.5	22.5	0.8
0.012	13	5	11	10	0.6	0.27	26.5	6	15	22.5	0.8
0.015	13	5	11	10	0.6	0.33	26.5	8.5	17	22.5	0.8
0.018	13	5	11	10	0.6	0.39	26.5	8.5	17	22.5	0.8
0.022	13	5	11	10	0.6	0.47	26.5	8.5	17	22.5	0.8
0.022	18	5	11	15	0.6	0.56	31.5	11	19.5	27.5	0.8
0.027	13	5	11	10	0.6	0.68	31.5	11	19.5	27.5	0.8
0.033	13	5	11	10	0.6	0.82	31.5	11	19.5	27.5	0.8
0.039	13	5	11	10	0.6	1	31.5	11	19.5	27.5	0.8
0.047	18	5	11	15	0.8	1.5	31.5	13	21.5	27.5	0.8
0.056	18	5	11	15	0.8	2.2	31.5	14	25	27.5	0.8
B type											
CAP	L $\pm$ 1.0	T $\pm$ 1.0	H $\pm$ 1.0	P $\pm$ 1.0	d $\varnothing$ ±0.05	CAP	L $\pm$ 1.0	T $\pm$ 1.0	H $\pm$ 1.0	P $\pm$ 1.0	d $\varnothing$ ±0.05
0.01	18	5	11	15	0.8	0.33	18	8.5	14.5	15	0.8
0.033	18	5	11	15	0.8	0.39	18	8	17	15	0.8
0.047	13	5	11	10	0.6	0.47	18	10	16	15	0.8
0.056	13	5	11	10	0.6	0.56	26.5	10	19	22.5	0.8
0.068	13	5	11	10	0.6	0.68	18	11	19	15	0.8
0.082	13	6	12	10	0.6	0.68	26.5	10	19	22.5	0.8
0.1	13	6	12	10	0.6	0.82	26.5	10	19	22.5	0.8
0.18	18	7.5	13.5	15	0.8	1	26.5	10	19	22.5	0.8
0.22	18	8.5	14.5	15	0.8	1.5	26	12	21.5	22.5	0.8
0.25	18	8.5	14.5	15	0.8						
0.27	18	7.5	13.5	15	0.8						

Please contact us for special item or size not listed

Note: Specifications are subject to change without notice. For more detail and update, please visit our website.